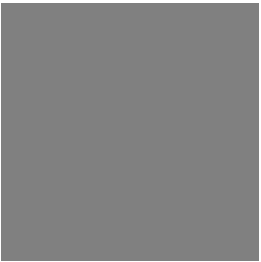


Volusia's Priority Risk Factors:

a community review of critical issues impacting children in 2003



**Published by One Voice for Volusia, Inc.
February 2003**

Special Thanks to the Data Workgroup Members:

Toni Barrett, Dixie Morgese, Elaine Dunlap, Janice Cashell, Shirley Wilson, and Anne Epstein.

Funded in Part by:

This project was supported by Award No. 2002-JN-FX-0066
awarded by the Drug-Free Communities Support Program,
Office of Justice Programs

Governor's Drug Free Communities Program
Title IV Funding from the Safe and Drug-Free Schools
and Communities Act of 1994



The opinions, findings, and conclusions or recommendations expressed in this publication/program/exhibition are those of the author(s)
and do not necessarily reflect the views of the Department of Justice.

Use of this document in whole or in part:

This document was created for use by all members of the Volusia County community,
we only ask that you give credit to One Voice for Volusia and cite this document when it is utilized.

Table of Contents

Executive Summary	2
The Methodology and Process	3
Priority Risk Factors.....	4
Extreme Economic Deprivation.....	5
Early Initiation of the Problem Behavior	6
Family Management Problems	7
Secondary Risk Factors	8
Transitions and Mobility	9
Friends Who Engage in the Problem Behavior	10
Early and Persistent Antisocial Behavior.....	11
Family Conflict.....	12
Favorable Parental Attitudes	13
Family History of the Problem Behavior	14
Lack of Commitment to School	15
Academic Failure Beginning in Late Elementary School.....	16
Risk Factors, Not Ranked.....	17
Availability of Drugs	18
Availability of Firearms	19
Community Laws and Norms Favorable Towards Drug Use and Crime	20
Low Neighborhood Attachment and Community Disorganization.....	21
Alienation and Rebelliousness	22
Peer Favorable Attitudes Toward the Problem Behavior	23
The Five Problem Behaviors.....	24
Substance Abuse.....	25
Juvenile Delinquency	26
Violence.....	27
Teen Pregnancy.....	28
School Dropout.....	29
Date Notes, Sources and Other Insights.....	30

Executive Summary

About One Voice for Volusia

One Voice for Volusia is a strategic planning coalition of representatives from over 50 governmental, not-for-profit and community organizations working to improve the lives of Volusia County youth and families. Through the utilization of the *Communities that Care*® community change model, One Voice is working to reduce and prevent five problem behaviors in youth: Substance Abuse, Teen Pregnancy, Juvenile Delinquency, Violence and School Dropout.

The Data Review and Analysis Process

This is the third year that One Voice for Volusia has collected and analyzed indicator data in order to set community priorities. The process, although based in the use of empirical data, is a *COMMUNITY PROCESS*. The process includes presenting the collected data to professionals in the human services field to obtain interpretations of the individual indicators. This year representatives from over 22 agencies participated in the process.

The Results

The results this year consist of three priority risk factors, eight secondary risk factors, and six risk factors that were left unranked because of unavailable data.

Priority Risk Factors

1. Extreme Economic Deprivation
2. Early Initiation of the Problem Behavior
3. Family Management Problems

Secondary Risk Factors

4. Transitions and Mobility
5. Friends Who Engage in the Problem Behavior
6. Early and Persistent Antisocial Behavior
7. Family Conflict
8. Favorable Parental Attitudes
9. Family History of the Problem Behavior
10. Lack of Commitment to School
11. Academic Failure Beginning in Late Elementary School

Unranked Risk Factors

- Availability of Drugs
- Availability of Firearms
- Community Laws and Norms Favorable Towards Drug Use and Crime
- Low Neighborhood Attachment and Community Disorganization
- Alienation and Rebelliousness
- Peer Favorable Attitudes Toward the Problem Behavior

Where Do We Go From Here?

One Voice for Volusia will be creating a community-driven strategic plan in the Spring of 2003 to target our priority risk factors. Our strategic plan and this document will be a resource for:

- **One Voice for Volusia**, in advocating for community change.
- **Elected Officials and Key Community Leaders**, in their efforts to improve the quality of life in Volusia County.
- **Funding Bodies**, in their efforts to prioritize issues to maximize limited funds.
- **Service Providers**, in implementing programs to increase community protective factors and reduce priority risk factors.
- **The Community**, in setting benchmarks for continued progress.

The Methodology and Process

The Methodology

One Voice for Volusia utilizes a research-based community planning model called *Communities that Care*. This model, created by Dr. David Hawkins and Dr. Richard Catalano, includes a community analysis phase grounded in the review and prioritization of local indicator data. Workgroup members and Planning Team members reviewed over 50 data indicators as part of the 2003 process.

This Year's Process

One Voice for Volusia began the data review process in late Summer of 2002 with the collection of indicator data. The Data Collection and Analysis Workgroup met regularly to review that data that was being collected and troubleshoot missing data. On September 24th, the workgroup reviewed the final collection of data and narrowed the risk factors down to eleven based on the amount and quality of available data.

On October 9, 2002 the collected indicator data for each risk factor was presented to representatives from over 22 organizations. Those present had the opportunity to complete a score sheet for each risk factor based on the following methodology:

- **Data Confidence:** Do the indicators directly relate to the risk factor? Do you have confidence in the accuracy of the data?
- **Trends:** Is Volusia County doing better or worse than the state or nation? Is the indicator trend moving in a positive or negative direction?
- **Impact:** How important is this risk factor in Volusia County?

Participants scored each risk factor using a scale of 1 to 5 in each of the above three categories. These scores were combined and the risk factors were ranked based on the collected feedback.

The Limitations

Our process, although grounded in the use of empirical data, is not without limitations. We have attempted to create an objective methodology to review each risk factor, but the input and analysis of the data has a certain element of human interpretation. This “human element” is both a limitation and a strength of the process. By combining empirical data with experiential knowledge, this process is a community based effort to utilize data as a foundation for community planning.

One of the biggest limitations of this process is the lack of available data. As you will see on the following pages, 6 of the risk factors were left unranked because there was not enough data to consider the risk factors as priorities. This is a huge barrier to this process, and the workgroup intends to make recommendations to mitigate this particular barrier.

Priority Risk Factors

1. Extreme Economic Deprivation
2. Early Initiation of the Problem Behavior
3. Family Management Problems

Risk Factor: Extreme Economic Deprivation

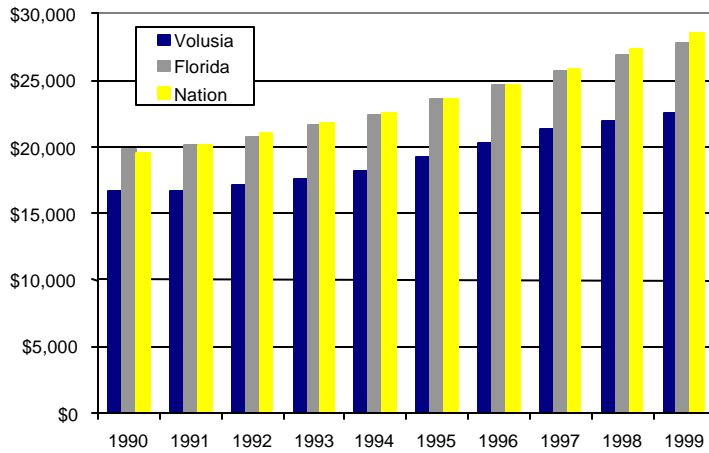
Domain: Community

Indicators & Sources:

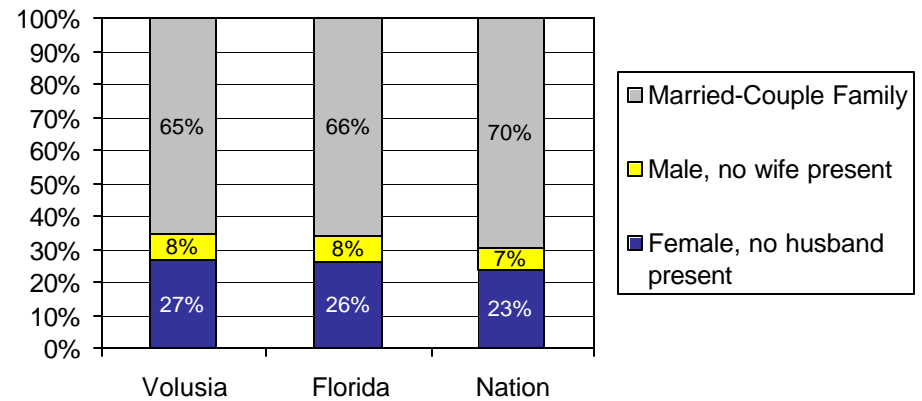
- Unemployment Rate, *Florida Research and Economic Database*
- Per Capita Income, *Florida Research and Economic Database*
- Household Makeup, *2000 Census*

Why is this Important?
 Children who live in deteriorating and crime-ridden neighborhoods characterized by poverty are more likely to develop problems with delinquency, teen pregnancy, school dropout and violence. Children who live in these areas and have behavior and adjustment problems early in life are also more likely to have problems with drugs later on.

Per Capita Income



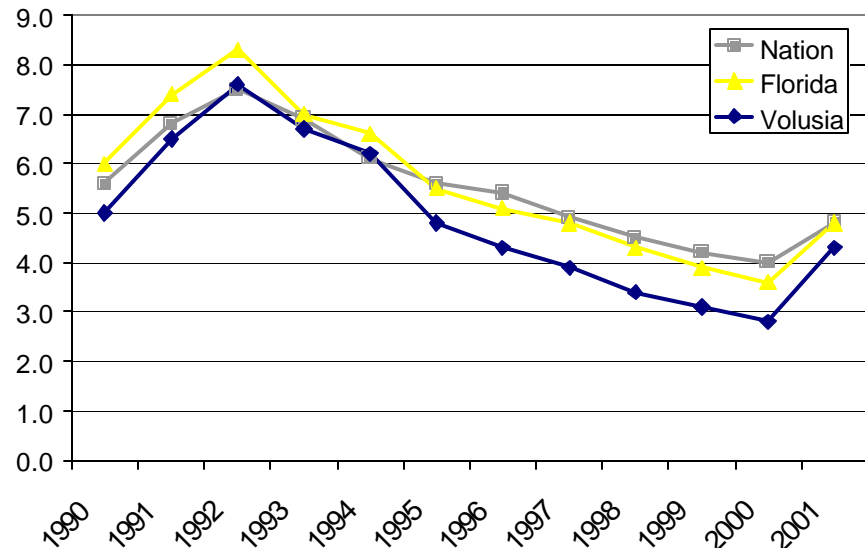
Percent of Households with Children under 18, by Type



Current Status: The per capita income in Volusia County is considerably lower than that of the nation and the rest of the state and unemployment rates are rising. Over 35% of our county's families are lead by only one wage earner.

Desired Status: Volusia County families earn enough to meet their own needs so that all children are effectively supported and nurtured.

Unemployment Rates



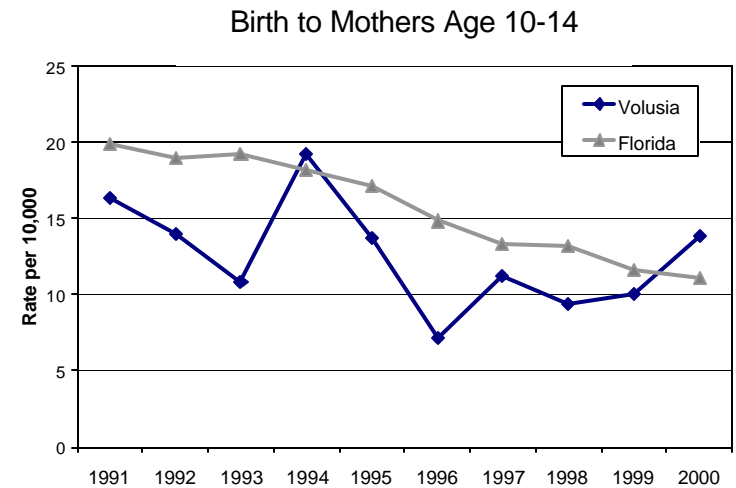
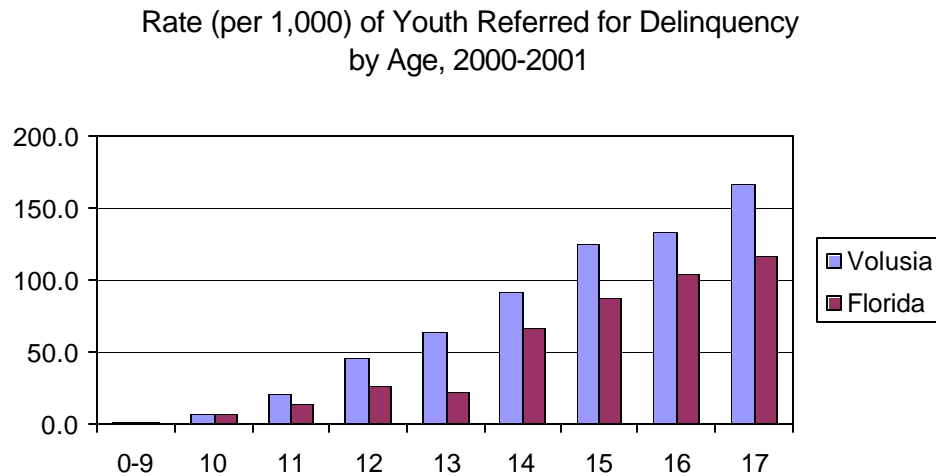
Risk Factor: Early Initiation of the Problem Behavior

Domain: Individual/Peer

Indicators & Sources:

- Rate of arrests for youth age 10-14, *Florida Department of Juvenile Justice*
- Teen births to mothers age 10-14, *Public Health Indicators Data System*
- Reported substance use in last 30 days, *FL Youth Substance Abuse Survey 2000*

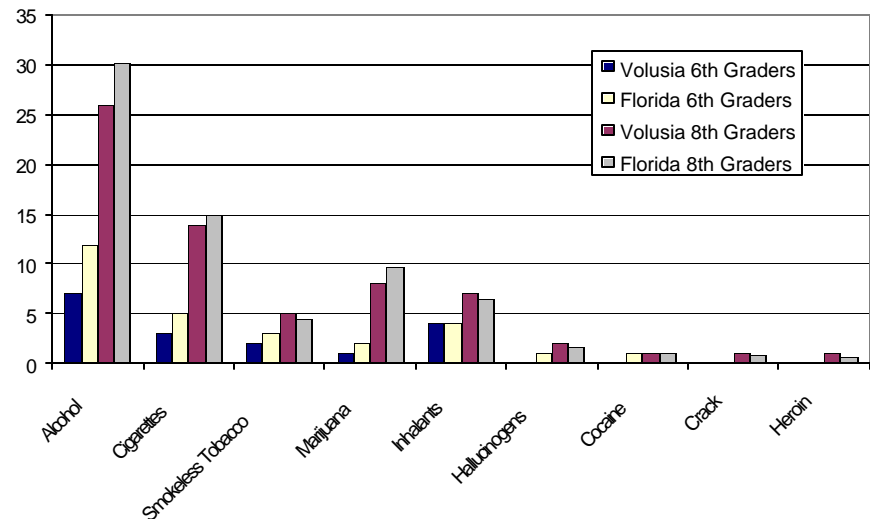
Why is this Important?
 The earlier young people begin problem behaviors, such as using drugs or committing crimes, the greater the likelihood that they will have problems with these behaviors later on.



Current Status: Delinquency referral rates for youth age 10-14 are consistently higher than in the rest of the state, teen birth rates are showing a slight increase and an alarming number of Volusia County students are using drugs and alcohol, despite lower rates than that of Florida.

Desired Status: The onset of any problem behaviors in our youth is delayed as long as possible or is all-together eliminated.

Percent of Students Who Report Using the Identified Substance in the Last 30 Days



Risk Factor: Family Management Problems

Domain: Family

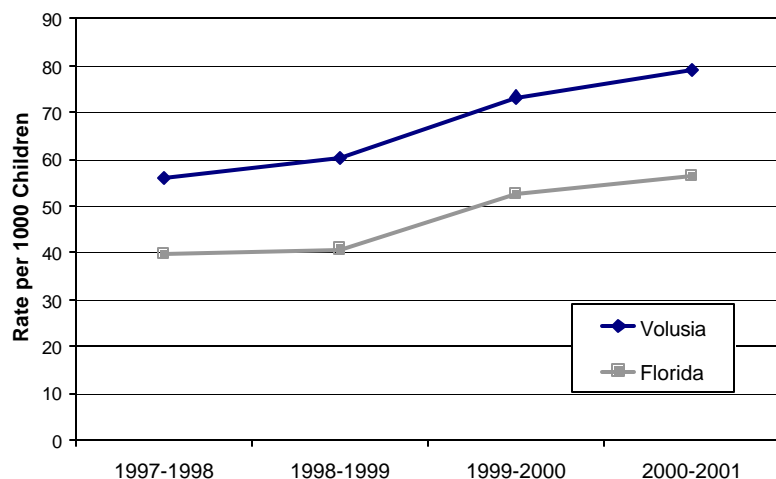
Indicators & Sources:

- Child Abuse and Neglect Rates, *Florida Abuse Hotline Information System*
- Risk Factor Data: Poor Family Discipline and Poor Family Supervision, *Florida Youth Substance Abuse Survey 2000*
- Children in Foster Care, *Dept. of Children and Families Substitute Care Report*

Why is this Important?

This risk factor has been shown to increase the risk for all problem behaviors. Poor family management practices include lack of clear expectations for behavior, failure of parents to monitor their children (knowing where the children are and whom the children are with) and excessively severe or inconsistent punishment.

Rate of Child Abuse & Neglect Reports



Current Status: Volusia County has a higher abuse report rate than the rest of Florida and the number of children in foster care is increasing.

Desired Status: Volusia County children are safe from abuse and live in families with clear expectations for behaviors and proper supervision and discipline.

2000 Florida Youth Substance Abuse Survey
Poor Family Supervision and Discipline

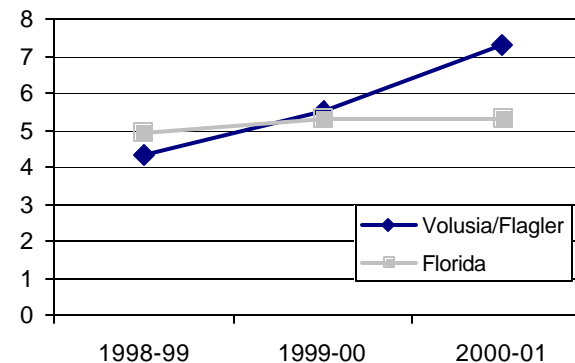
	Volusia	Florida
Poor Family Supervision	46	50
Poor Family Discipline	46	53

Note: A score of 50 represents the national average. A score above 50 indicates an elevated risk.

Survey Questions for this Risk Factor:

- My parents want me to call if I'm going to be late getting home.
- Would your parents know if you did not come home on time?
- When I am not home, my parents know where I am and who I am with.
- The rules in my family are clear.

Average Number of Children in Foster Care, per 1,000 Children



Secondary Risk Factors

4. Transitions and Mobility
5. Friends Who Engage in the Problem Behavior
6. Early and Persistent Antisocial Behavior
7. Family Conflict
8. Favorable Parental Attitudes
9. Family History of the Problem Behavior
10. Lack of Commitment to School
11. Academic Failure Beginning in Late Elementary School

Risk Factor: Transitions and Mobility

Domain: Community

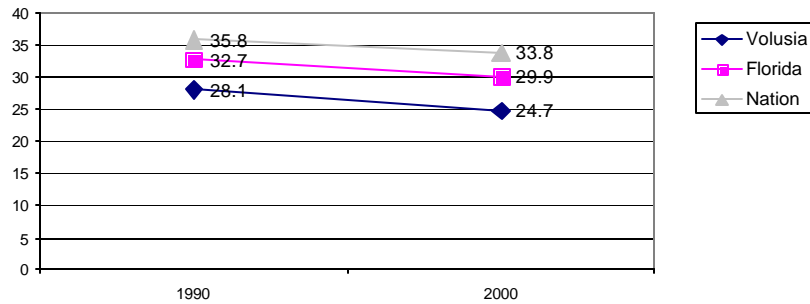
Indicators & Sources:

- Rental Residential Property Rates, *Census 2000*
- School Transition Rates, *Florida School Indicators Report*
- Volusia County Migration Data, *County of Volusia Economic Development Department*

Why is this Important?

Even normal school transitions can predict increases in problem behaviors. When children move from elementary school to middle school or from middle school to high school, significant increases in the rates of drug use, school dropout, and antisocial behavior may occur. Communities with high rates of mobility appear to have increased drug and crime problems. The more frequently people in a community move, the greater the risk of criminal behavior.

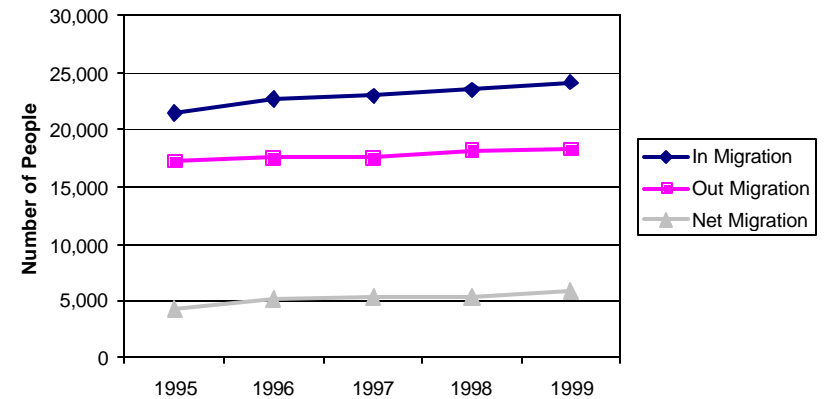
Percent of Residents Living in Rental Property



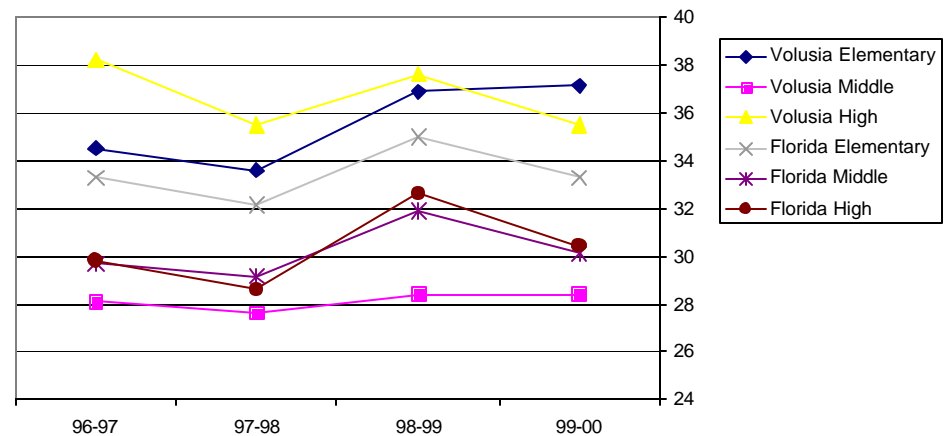
Current Status: Although there is a lower number of Volusia County residents living in rental property than the state of the nation, the population is highly transitive with a high rate of In-migration. Children in Volusia County are moving in and out of schools at a high rate.

Desired Status: Volusia County residents move less and are able to establish roots and connections in a particular community.

Volusia County Migration Rates



Mobility Rates, by Type of School



Risk Factor: Friends Who Engage in the Problem Behavior

Domain: Individual/Peer

Indicators & Sources:

- Girls age 15-19 with Sexually Transmitted Disease, *Public Health Indicator Data System*
- Reported Use by Friends of Drugs and Alcohol, *Florida Youth Substance Abuse Survey 2000*
- Rate of Delinquency Referrals, *DJJ Delinquency Profile*

Why is this Important?

Young people who associate with peers who engage in problem behaviors - delinquency, substance abuse, violent activity, sexual activity, or dropping out of school - are much more likely to engage in the same behaviors. This association is one of the most consistent predictors that research has identified--even when young people come from well-managed families and do not experience other risk factors, just spending time with friends who engage in problem behaviors greatly increases the risk of developing similar problems.

**2000 Florida Youth Substance Abuse Survey
Friends' Delinquent Behavior and Use of Drugs**

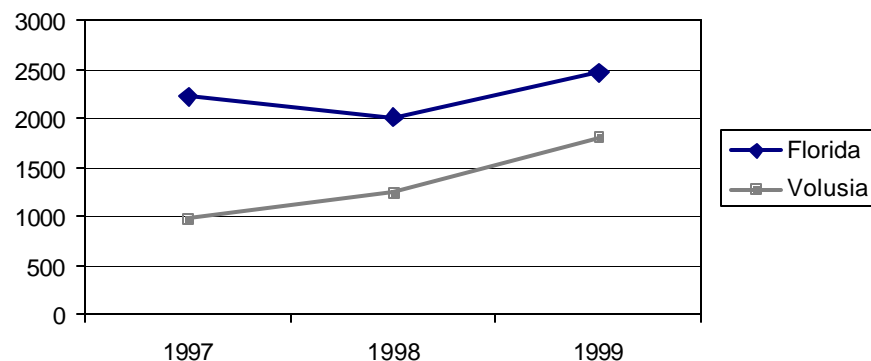
	Volusia	Florida
Friends' Delinquent Behavior	53	55
Friends' Use of Drugs	42	47

Note: A score of 50 represents the national average. A score above 50 indicates an elevated risk.

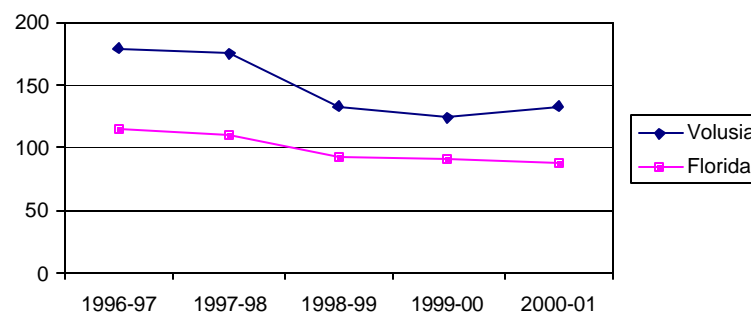
Survey Questions for this Risk Factor:

- In the past year, how many of your best friends have: been suspended from school, carried a handgun, sold illegal drugs, been arrested, dropped out of school?
- In the best year, how many of your best friends have: smoked cigarettes, tried alcohol, used marijuana, used illegal drugs?

**Reported Cases of Chlamydia among
Females Age 15-19**



**Rate of Delinquency Referrals,
per 1000 Youth Age 10-17**



Current Status: There is an elevated rate of delinquency in Volusia County and youth report that their friend's delinquent behavior is higher than in the rest of the nation. The rate of Chlamydia among Volusia County girls is increasing.

Desired Status: Volusia County youth have prosocial friends who do not engage in any problem behaviors.

Risk Factor: Early and Persistent Antisocial Behavior

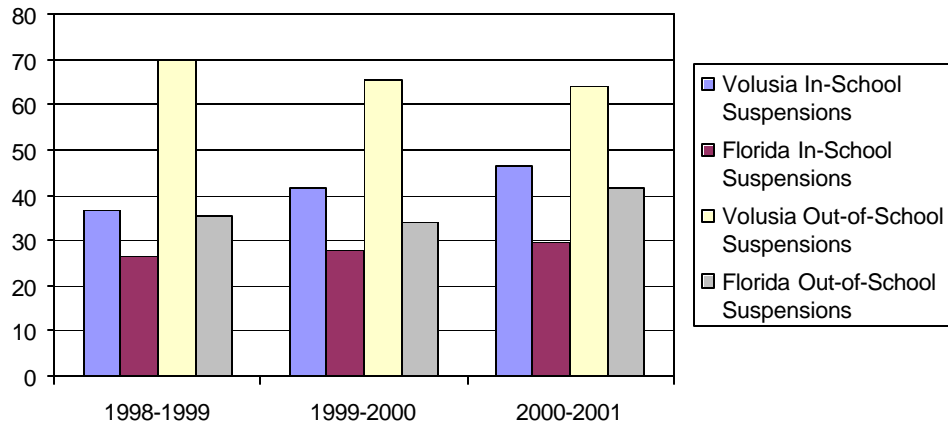
Domain: School

Indicators & Sources:

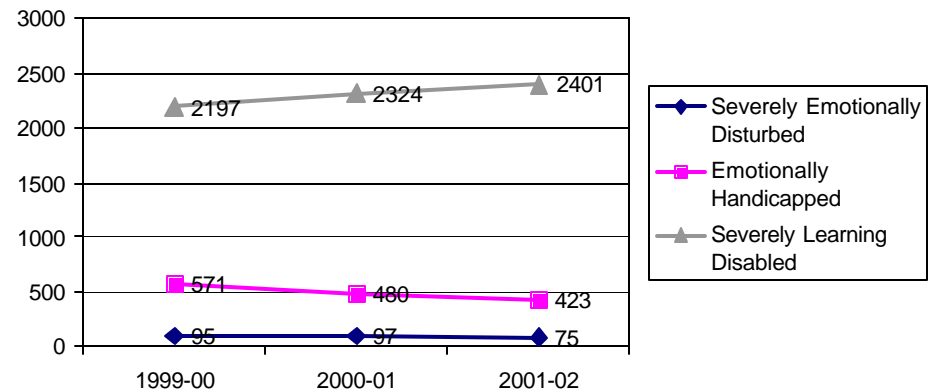
- Disciplinary Actions in Elementary School, *Florida Department of Education SESIR data*
- Students with Specific Disabilities, *Florida School Indicators Report*
- Poor School Attendance in Elementary School, *School Advisory Council Reports*

Why is this Important?
 Boys who are aggressive in grades K-3 are at higher risk of substance abuse and juvenile delinquency. This increased risk also applies to aggressive behavior combined with hyperactivity or attention deficit disorder. Antisocial behaviors in early adolescence, such as misbehaving in school, skipping school, and fighting in school, increase the risk for all of the problem behaviors.

Disciplinary Actions in Elementary School. Per 1,000 Students



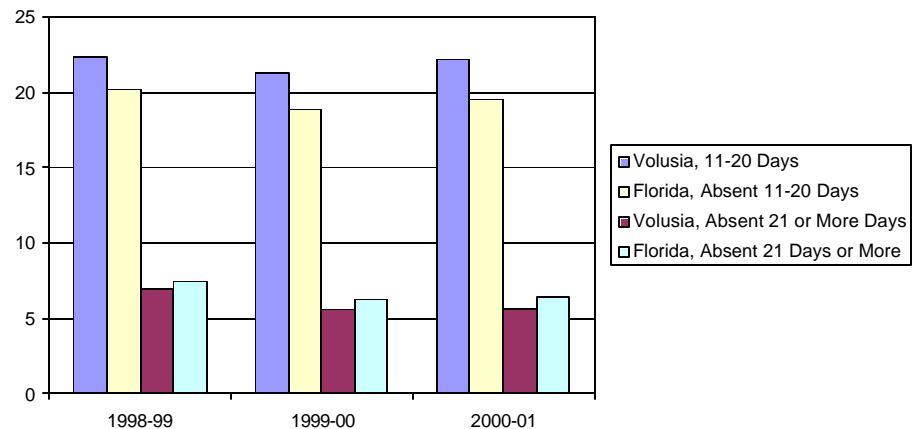
Number of Volusia County Elementary School Students With Specific Disabilities



Out-of-School and In-School Suspensions in Volusia County than in Florida. Although the numbers of children identified as emotionally handicapped and severely emotionally disturbed is declining, the number of severely learning disabled students is increasing.

Desired Status: Volusia County youth do not exhibit any aggressive or antisocial behavior in late elementary. Children regularly attend school.

Percentage of Elementary School Students with Poor Attendance



Risk Factor: Family Conflict

Domain: Family

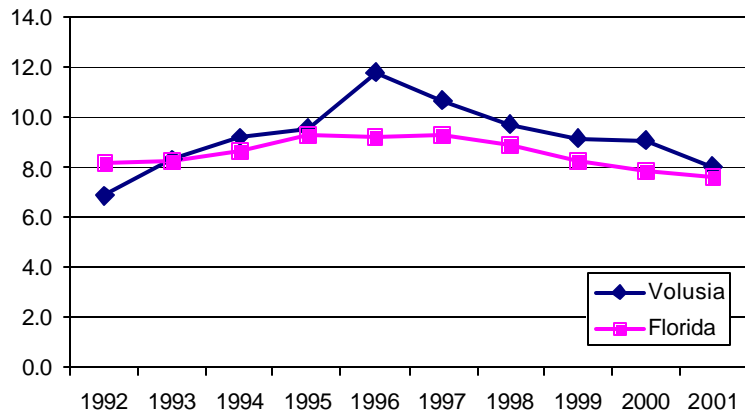
Indicators & Sources:

- Divorce Rates, *Florida Vital Statistics*
- Domestic Violence Offenses, *Florida Department of Law Enforcement, UCR Data*
- Single Parent Family Households, *2000 Census*

Why is this Important?

Although children whose parents are divorced have higher rates of delinquency and substance abuse, it appears that it is not the divorce itself that contributes to delinquency behavior. Rather, conflict between family members appears to be more important in predicting delinquency than family structure. Domestic violence in a family increases the likelihood that young people will engage in violent behavior themselves and children raised in an environment of conflict appear to be at risk for all of the problem behaviors.

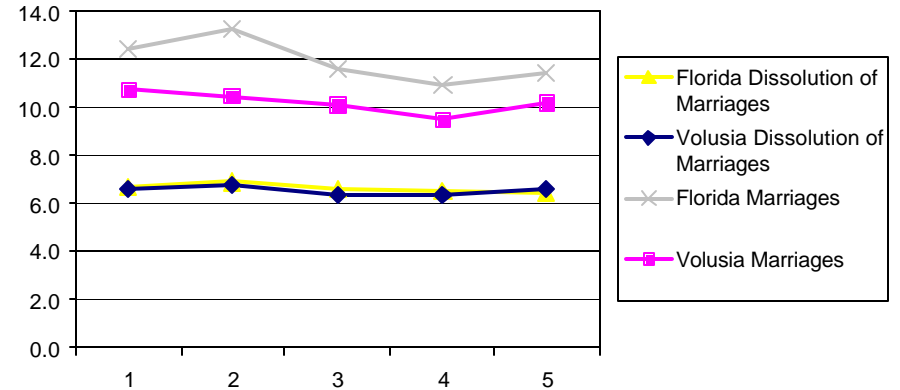
Domestic Violence Offense Rates, Per 1,000 Population



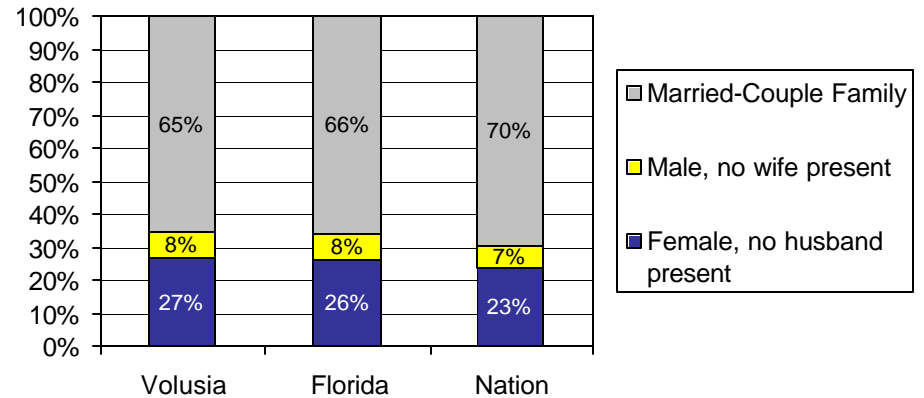
Current Status: Volusia County has a slightly higher Domestic Violence Offense Rate than Florida, but it is declining. Volusia County has more single-parent led households than Florida or the Nation.

Desired Status: Volusia County children live in stable and secure families and are not exposed to violence.

Rate of Marriage and Dissolution of Marriage, Per 1000 Population



Percent of Households with Children under 18, by Type



Risk Factor: Favorable Parental Attitudes/Involvement *in the Problem Behavior*

Domain: Family

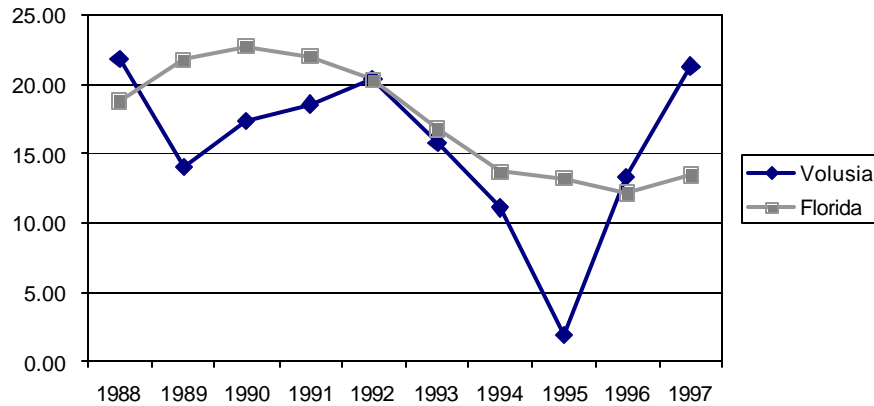
Indicators & Sources:

- Substance Exposed Newborns, *Vital Statistics*
- Crime Rates for Violent and Property Crimes, *Florida Department of Law Enforcement, UCR Data*

Why is this Important?

Children of parents who excuse their children for breaking the law are more likely to develop problems with juvenile delinquency. In families where parents display violent behavior towards those outside the family, there is an increase in the risk that a child will become violent. Further, in families where parents involve children in their own drug or alcohol behavior, such as asking the child to light the parent's cigarette or get the parent a beer from the refrigerator, there is an increased likelihood that the children will become drug abusers in adolescence.

Substance Exposed Newborns, Per 1,000



Current Status: The number of substance exposed newborns is inconsistent (perhaps due to tracking). The Volusia County property and violent crime rate is lower than the rest of the state.

Desired Status: Parents are not involved in and do not condone problem behavior.

**2000 Florida Youth Substance Abuse Survey
Favorable Parental Attitudes of Problem Behavior**

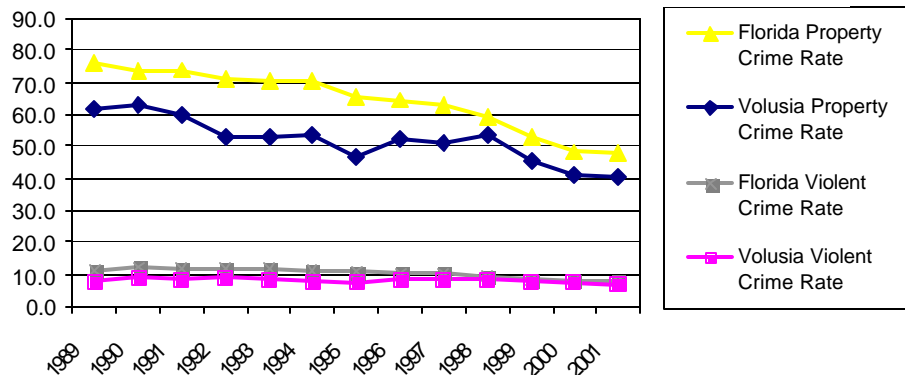
	Volusia	Florida
Parental Attitudes Favorable to ATOD use	45	46
Parental Attitudes Favorable to Antisocial behavior	47	48

Note: A score of 50 represents the national average. A score above 50 indicates an elevated risk.

Survey Questions for this Risk Factor:

- How wrong do you think it would be for YOU to: drink alcohol, smoke cigarettes, smoke marijuana, steal, or pick a fight with someone?

Property and Violent Crime Rates, per 1,000 Population



Risk Factor: Family History of the Problem Behavior

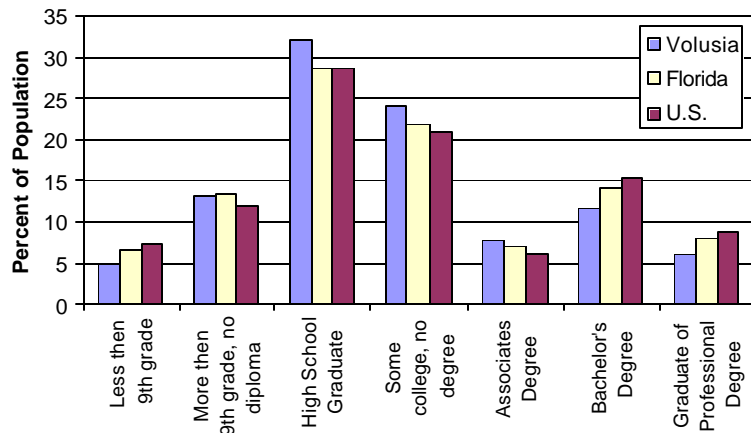
Domain: Family

Indicators & Sources:

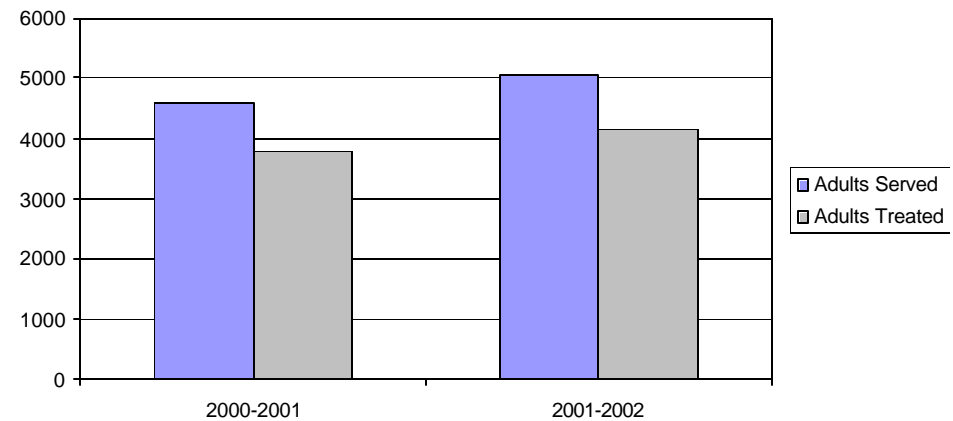
- Educational Attainment of Persons over 25, *Census 2000*
- Adult Substance Abuse Treatment, *Department of Children and Families ADM Data*

Why is this Important?
 Children raised in a family with a history of addiction to alcohol or other drugs are at increased risk of having alcohol or other drug problems, and children born or raised in a family with a history of criminal activity are at increased risk of delinquency. Similarly, children born to a teenage mother are more likely to be teenage parents, and children of dropouts are more likely to drop out of school themselves.

Education Attainment (Persons over 25), By Percentage



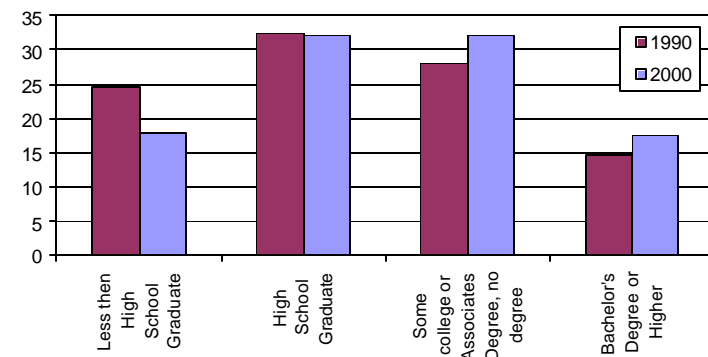
Adult Substance Abuse Treatment Data District 12 (Volusia & Flagler)



Current Status: There is a higher number of Volusia County adults with some college or a high school diploma than in Florida or the Nation, but fewer adults with higher education degrees. The percentage of adults with educational degrees increase in Volusia County in 2002.

Desired Status: Volusia County families have no history of involvement in problem behaviors.

Volusia County Educational Attainment Trends (Persons over 25) , By Percentage



Risk Factor: Lack of Commitment to School

Domain: School

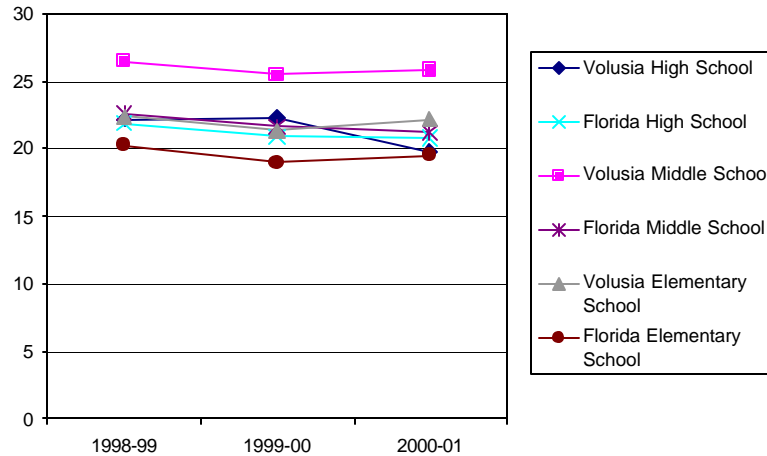
Indicators & Sources:

- Poor School Attendance, *Florida School Advisory Council Report*
- Number of Persons age 25 or older who have Completed High School, *Census 2000*

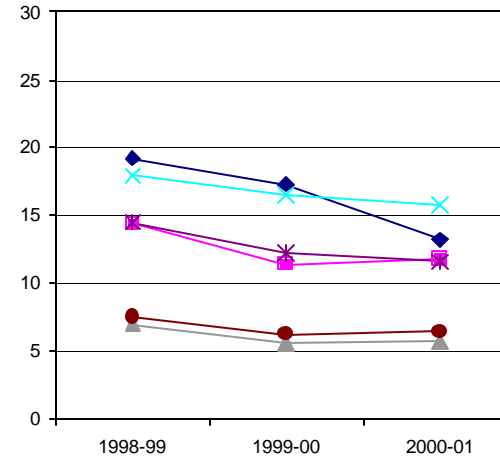
Why is this Important?

Children who are not committed to school have ceased to see the role of student as a viable part of their lives and are at higher risk for problem behaviors.

Percentage of Students who were Absent 11-20 Days in the 180-Day School Year



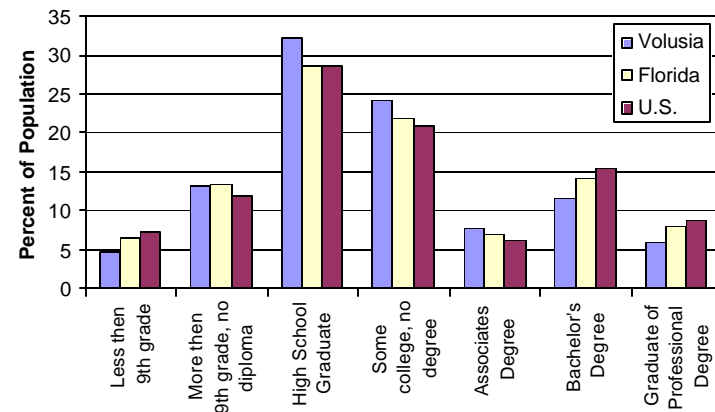
Percentage of Students who were Absent 21 or More Days in the 180-Day School Year



Current Status: There is a high rate of middle school students were absent between 11 and 20 days in a school year. The percentage of adults with educational degrees increase in Volusia County in 2002.

Desired Status: Volusia County students are committed to and understand the value of education.

Education Attainment (Persons over 25), By Percentage



Risk Factor: Academic Failure Beginning in Late Elementary School

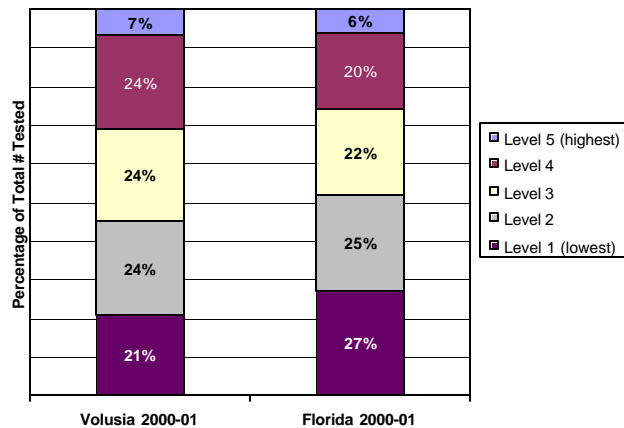
Domain: School

Indicators & Sources:

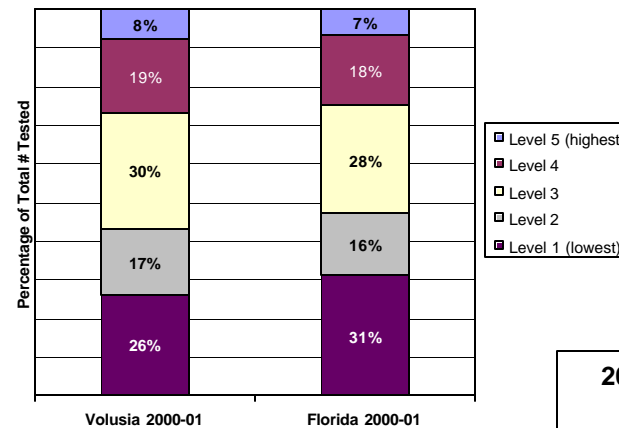
1. 5th Grade Math Scores, Florida Comprehensive Assessment Test, *Florida School Indicators Report*
2. 4th Grade Reading Scores, Florida Comprehensive Assessment Test, *Florida School Indicators Report*
3. Risk Factor Measure: Academic Failure, *FL. Youth Substance Abuse Survey 2000*

Why is this Important?
 Beginning in the late elementary grades, academic failure increases the risk of drug abuse, delinquency, violence, teen pregnancy, and school dropout. Children fail for many reasons, but it appears that the *experience* of failure itself, not necessarily a lack of ability, increases the risk of problem behaviors.

Florida Comprehensive Assessment Test
5th Grade Math Achievement Levels



Florida Comprehensive Assessment Test
4th Grade Reading Achievement Levels



Current Status: Children are showing a higher level of reading and math achievement than the rest of Florida, but over 40% are falling below the median level of performance. Volusia County students' perceptions about academic failure show a high level of risk.

Desired Status: All Volusia County students perform at their highest level of ability and have self-confidence in their performance.

2000 Florida Youth Substance Abuse Survey Academic Failure

Volusia	Florida
57	60

Note: A score of 50 represents the national average. A score above 50 indicates and elevated risk.

Survey Questions for this Risk Factor:

- Putting them all together, what were your grades like last year?
- Are our school grades better than the grades of most students in your class?

Unranked Risk Factors

- Availability of Drugs
- Availability of Firearms
- Community Laws and Norms Favorable Towards Drug Use and Crime
- Low Neighborhood Attachment and Community Disorganization
- Alienation and Rebelliousness
- Peer Favorable Attitudes Toward the Problem Behavior

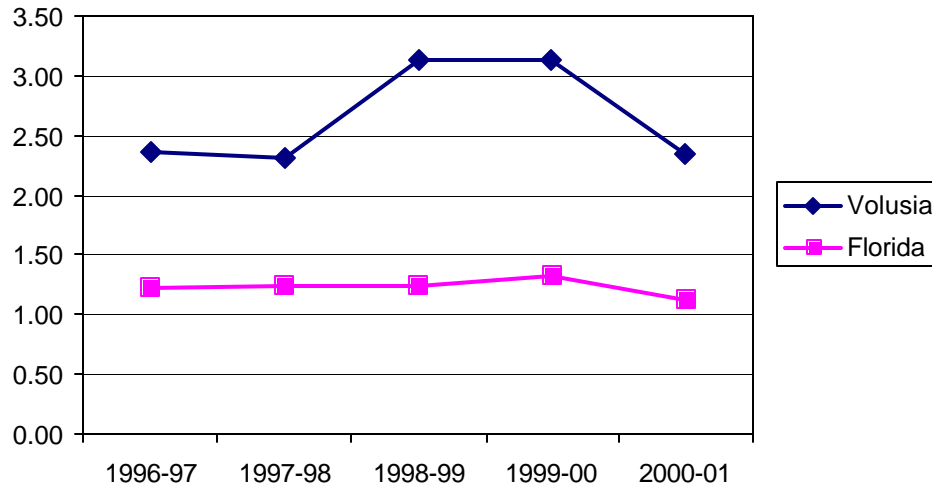
Risk Factor: Availability of Drugs

Domain: Community

Indicators & Sources:

- Alcohol Sales by Volume, *unavailable*
- Perceived Availability Data, *Florida Youth Substance Abuse Survey 2000*
- Rate of Youth Referred for Possession of Alcohol, *DJJ Delinquency Profile, 2000-2001*

Rate of Youth Referred for Possession of Alcohol,
Per 1,000 Age 10-17



Current Status: There is no data currently available to measure the availability of drugs and alcohol.

Desired Status: Children in Volusia County do not have access to drugs and alcohol.

Why is this Important?

The more available drugs are in a community, the higher the risk that young people will abuse drugs in the community. Perceived availability of drugs is also associated with risk. In schools where children just think that drugs are more available, a higher rate of drug use occurs.

2000 Florida Youth Substance Abuse Survey
Availability of Drugs

Volusia	Florida
38	42

Note: A score of 50 represents the national average. A score above 50 indicates and elevated risk.

Survey Questions for this Risk Factor:

- If you wanted to get some beer, wine or hard liquor, how easy would it be for you to get some?
- If you wanted to get some cigarettes/marijuana, how easy would it be for you to get some?
- If you wanted to get a drug like cocaine, LSD or amphetamines, how easy would it be for you to get some?

Volume of Alcohol sold in
Volusia County



Risk Factor: Availability of Firearms

Domain: Community

Indicators & Sources:

- Number of Concealed Weapons Licenses Issued, *Florida Division of Licensing*
- Number of weapons owned by or sold to Volusia County residents, *unavailable*
- Risk Factor Data: Antisocial Behavior, *Florida Youth Substance Abuse Survey2000*

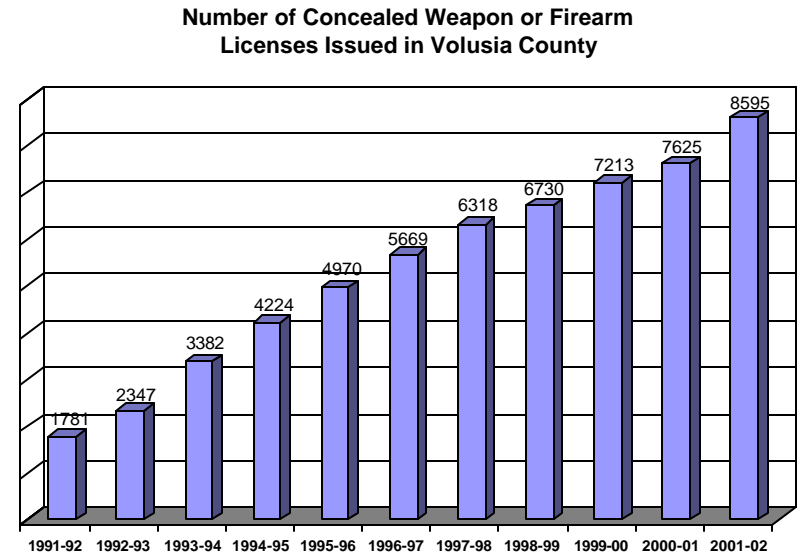
Why is this Important?

The easy availability of firearms in a community can escalate an exchange of angry words and fists into an exchange of gunfire. Research has found that communities with greater availability of firearms experience higher rates of violent crime, including homicide.

2000 Florida Youth Substance Abuse Survey
Antisocial Behavior

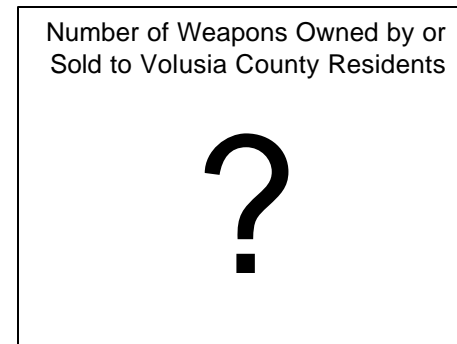
(Percentage of students who reporting engaging in the listed behavior in the last 12 months)

	Volusia		Florida	
	Ages 10-14	Ages 15-17	Ages 10-14	Ages 15-17
Carried a handgun	3.3%	5.4%	3.3%	5.5%
Taken a gun to school	0.7%	0.8%	0.8%	1.4%



Current Status: The number of concealed license weapons is increasing each year, but there is no real data available to measure the availability of firearms.

Desired Status: Children in Volusia County do not have access to firearms.

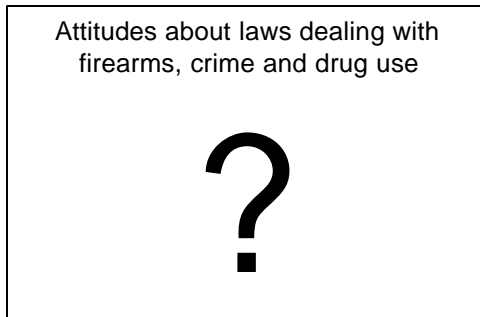


Risk Factor: Community Laws/Norms Favorable to Drug Use, Firearms & Crime

Domain: Community

Indicators & Sources:

- Disposition of Juvenile Delinquency Referrals, *Dept. of Juvenile Justice Delinquency Profile*
- Attitudes about laws dealing with firearms, crime and drug use, *unavailable*

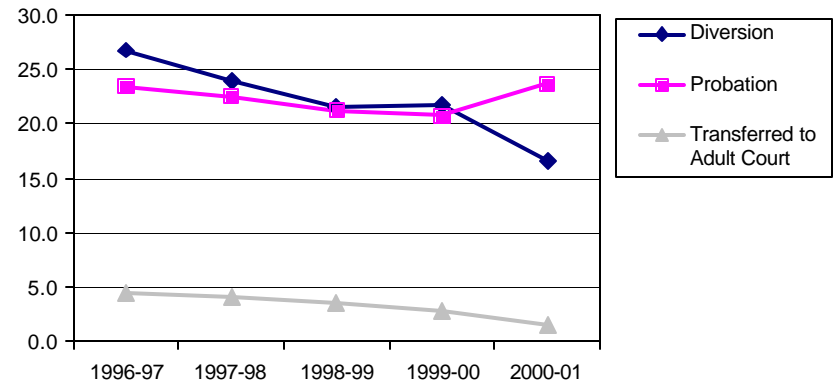


Current Status: There is not enough data available to evaluate the impact of community laws and norms on Volusia County youth.

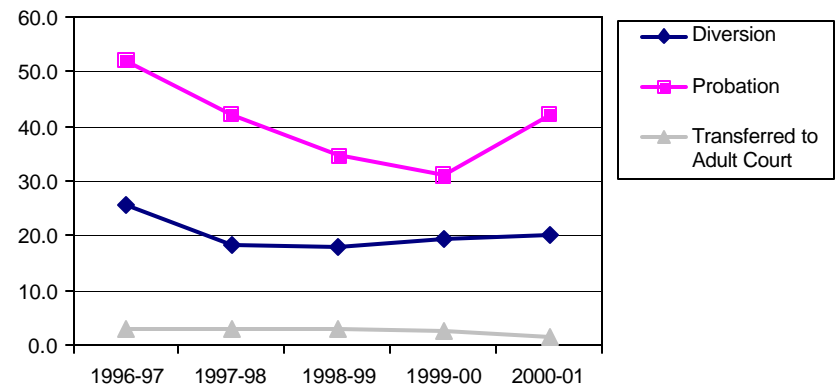
Desired Status: Volusia County's laws and community norms support prosocial activities and do not support problem behaviors.

Why is this Important?
 Community norms - the attitudes and policies a community holds concerning drug use, violence, and crime - are communicated through laws, written policies, informal social practices, the media and the expectations that parents, teachers, and other members of the community have for young people. Laws, tax rates, and community standards that favor or are unclear about substance abuse or crime put young people at higher risk of delinquency.

Rate of Delinquency Referral Dispositions Per 1,000 Population--Florida



Rate of Delinquency Referral Dispositions Per 1,000 Population--Volusia



Risk Factor: Low Neighborhood Attachment & Community Disorganization

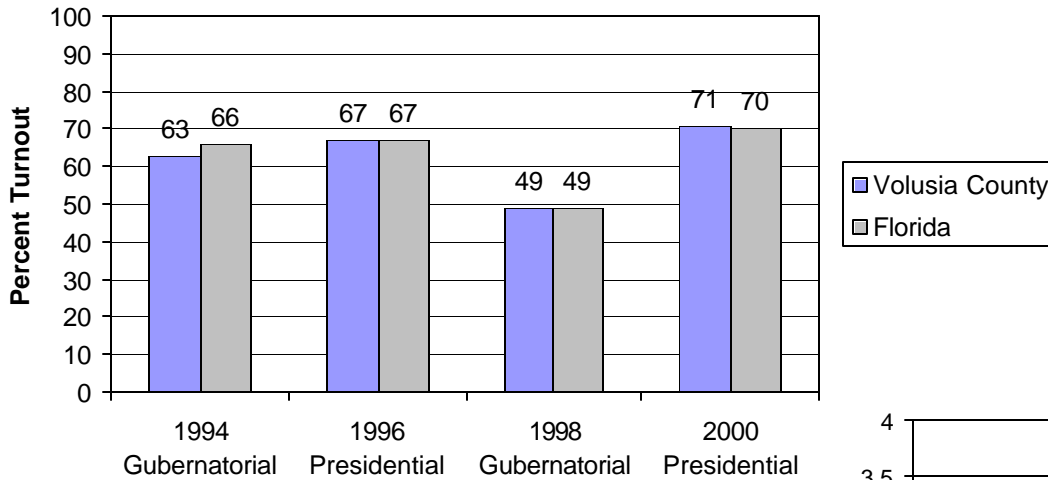
Domain: Community

Indicators & Sources:

- Voter Turnout Rates, *Volusia County Department of Elections*
- Per Capita Incarceration Rates, *Florida Department of Corrections Annual Reports*

Why is this Important?
 Higher rates of juvenile drug problems, crime, and delinquency, as well as higher rates of adult crime and drug trafficking, occur in neighborhoods where people have little attachment to the community, where the rates of vandalism are high, and where there is low surveillance of public places.

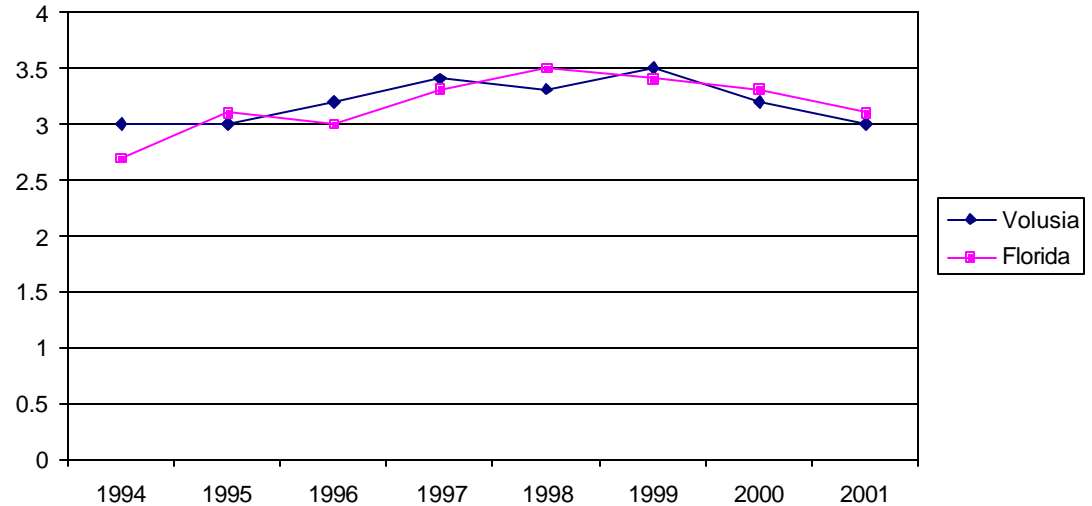
Voter Turnout



Current Status: Voter turnout is comparable to Florida and is increasing. Volusia County's incarceration rate is fairly steady. More data is needed.

Desired Status: Volusia County neighborhoods and communities are cohesive and citizens feel a connection to them.

Incarceration Rate in County Facilities



Risk Factor: Alienation and Rebelliousness

Domain: Individual/Peer

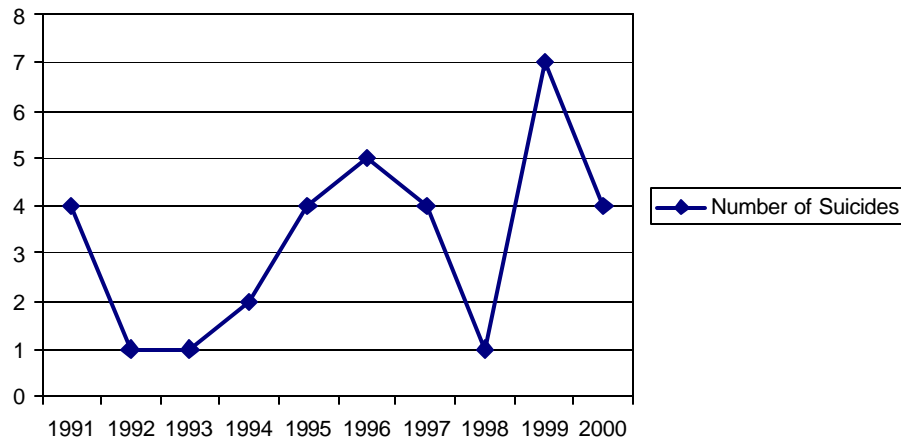
Indicators & Sources:

- Youth Charged with Vandalism, *Department of Juvenile Justice Delinquency Profile*
- Suicide Death Rates by age, *Vital Statistics*
- Risk Factor Measure: Gang Involvement, *Florida Youth Substance Abuse Survey 2000*

Why is this Important?

Young people who feel they are not part of society, are not bound by rules, don't believe in trying to be successful or responsible, or who take an active rebellious stance toward society, are at higher risk of problem behaviors. People who are consistently discriminated against may respond by removing themselves from the dominant culture and rebelling against it.

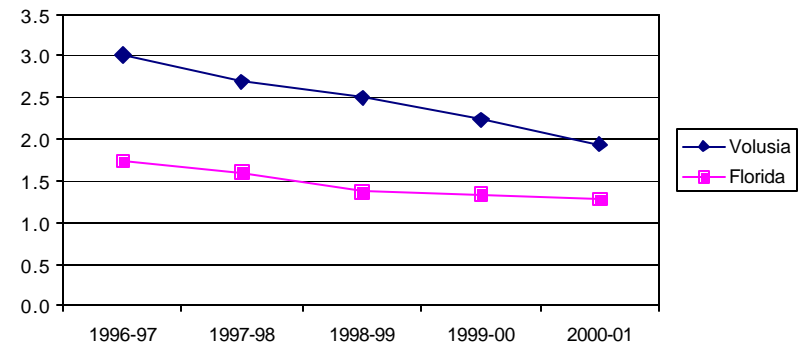
Number of Suicide Deaths per Year among Children Age 0-19



Current Status: The youth vandalism rate in Volusia is higher than in Florida, but is declining. Volusia county students report a low involvement in gangs, and the suicide rate is unstable.

Desired Status: Volusia County youth feel like they are part of society.

Rate of Youth Referred for Vandalism, per 1,000 Youth Age 10-17



**2000 Florida Youth Substance Abuse Survey
Gang Involvement**

Volusia	Florida
46	47

Note: A score of 50 represents the national average. A score above 50 indicates an elevated risk.

Survey Questions for this Risk Factor:

- In the past year, how many of your friends have been a member of a gang?
- Have you ever belonged to a gang?
- If you have ever belonged to a gang, did that gang have a name?

Risk Factor: Favorable Attitudes Toward the Problem Behavior

Domain: Individual/Peer

Indicators & Sources:

- Perception of Risk, *Florida Youth Substance Abuse Survey 2000*
- Risk Factor Measure: Favorable Attitudes, *Florida Youth Substance Abuse Survey 2000*

	Middle School		High School	
	Volusia	Florida	Volusia	Florida
Perceive great risk of harm if . . .				
– One of more drinks every day	42.7	41.8	37.0	42.0
– Smoke a pack or more every ay	67.1	63.7	70.2	68.9
– Try marijuana once or twice	42.3	40.1	21.5	25.1
See as cool if . . .				
– Drink alcohol regularly	6.3	7.5	4.9	5.9
– Smoke cigarettes	5.4	6.9	10.8	11.2
– Smoke marijuana	6.2	8.2	9.5	11.9
Think it wrong if . . .				
– Smoke cigarettes	88.3	85.9	59.7	65.4
– Drink alcohol regularly	85.8	82.0	50.1	54.7
– Use other illicit drugs	97.4	96.6	91.7	91.2

Current Status: It appears through the survey results presented that Volusia has better perceptions of harm and lower favorable attitudes toward the problem behavior, but there is not enough data available.

Desired Status: Volusia youth do not have favorable attitudes toward problem behavior.

Why is this Important?

During elementary school years, children usually express anti-drug, anti-crime, and pro-social attitudes. They have difficulty imagining why people use drugs, commit crimes, and drop out of school. However, in middle school, as others they know participate in such activities, their attitudes often shift toward greater acceptance of these behaviors. This acceptance places them at higher risk.

2000 Florida Youth Substance Abuse Survey
Favorable Attitudes Toward the Problem Behavior

	Volusia	Florida
Favorable Attitudes Toward Antisocial Behavior	34	37
Favorable Attitudes Toward ATOD Use	41	46

Survey Questions for this Risk Factor:

- How wrong do you think it would be to: take a handgun to school, steal anything worth \$5 or more, pick a fight with someone, attack someone with the idea of seriously hurting them?
- How wrong do you think it would be for someone your age to: drink alcohol, smoke cigarettes, smoke marijuana, us illegal drugs?

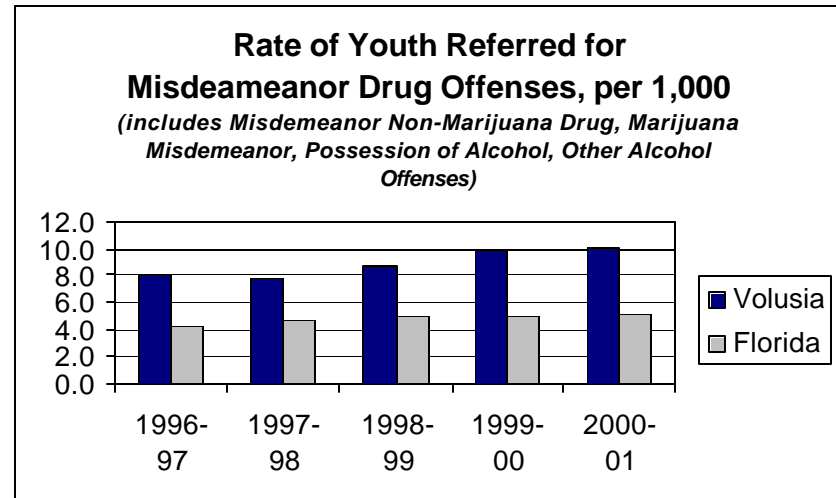
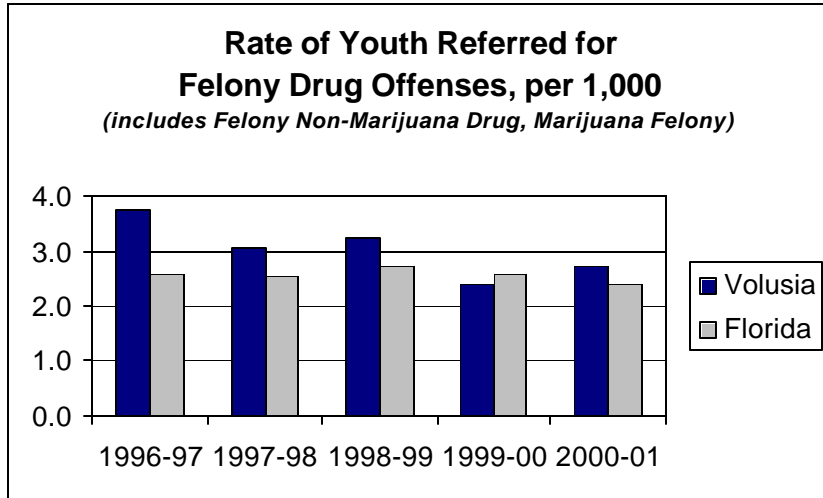
The Problem Behaviors

- Substance Abuse
- Juvenile Delinquency
- Violence
- Teen Pregnancy
- School Dropout

Problem Behavior: Substance Abuse

Sources:

- Department of Juvenile Justice Delinquency Profile
- Florida Youth Substance Abuse Survey 2000



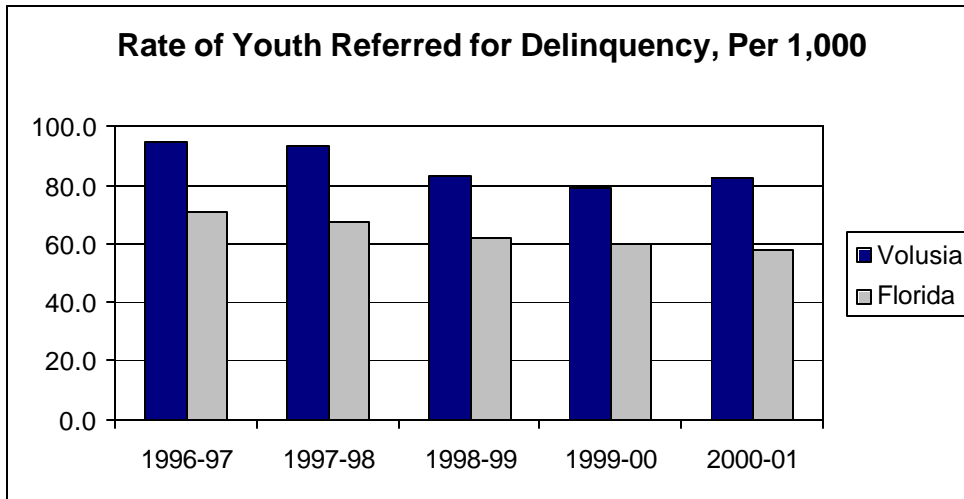
Percent of Students Who Report Having Used Listed Substances in the Last 30 Days
Florida Youth Substance Abuse Survey 2000

Substance	Grade 6	Grade 8	Grade 9	Grade 10	Grade 11	Grade 12
Alcohol	10.9	27.6	31.2	46.7	43.6	47.0
Tobacco	5.5	19.4	21.0	31.5	34.5	25.0
Marijuana	2.8	12.4	16.2	21.8	24.3	18.3

Problem Behavior: Juvenile Delinquency

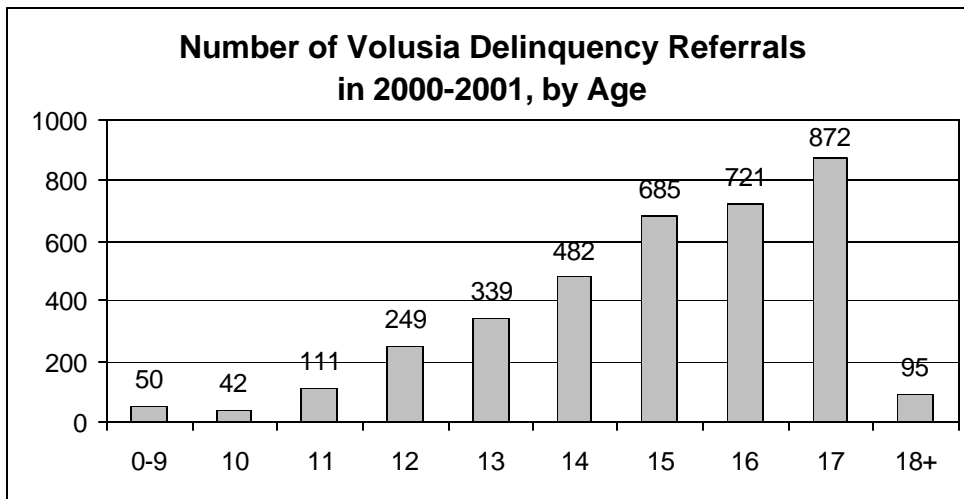
Sources:

- Department of Juvenile Justice Delinquency Profile



Department of Juvenile Justice Identified High Risk Zip codes in Volusia County

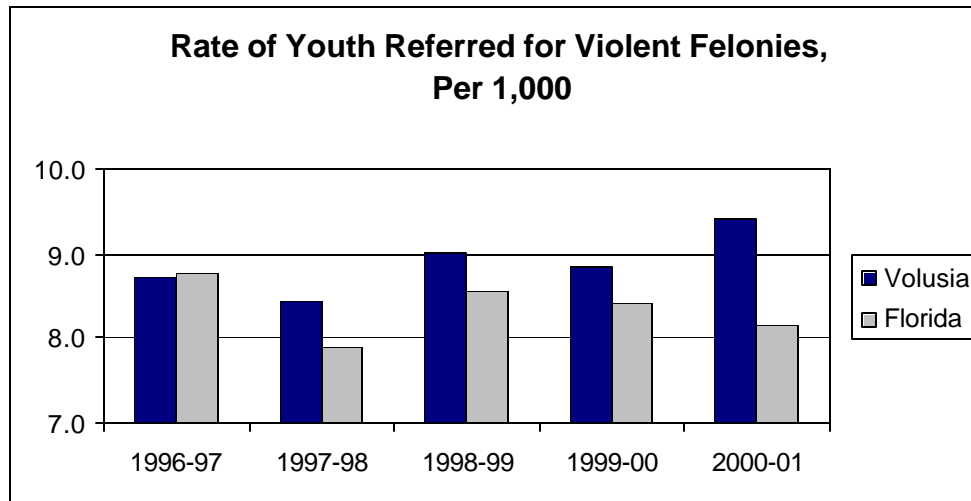
- 32114
- 32738
- 32117
- 32174
- 32119
- 32725
- 32720
- 32724
- 32168



Problem Behavior: Violence

Sources:

- Department of Juvenile Justice Delinquency Profile
- Florida Youth Substance Abuse Survey 2000



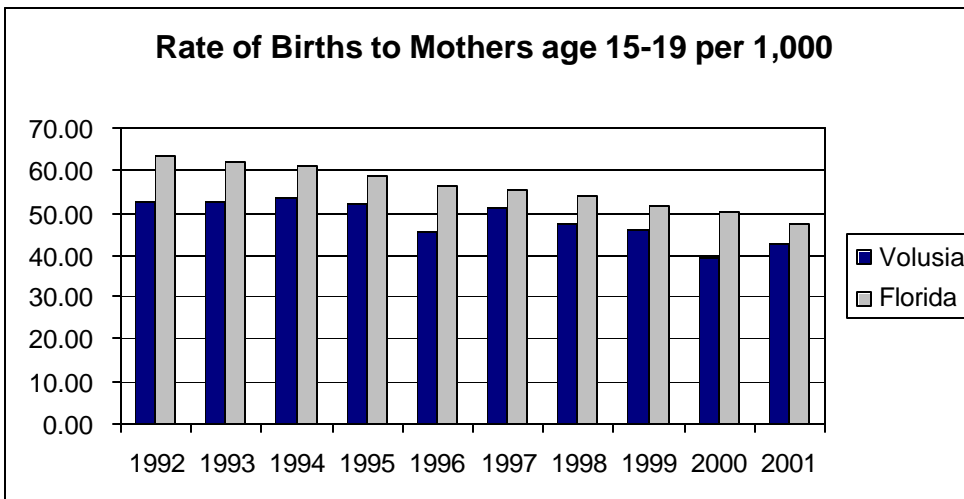
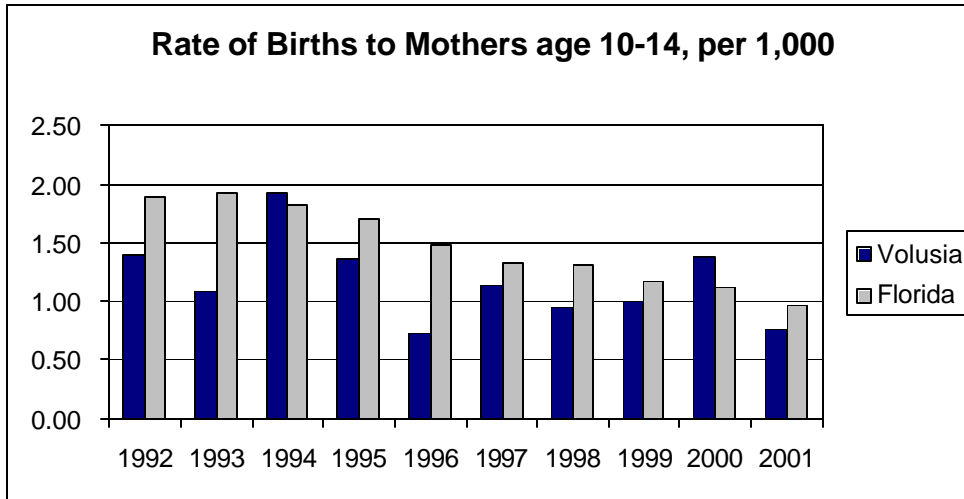
Statistics from the Florida Youth Substance Abuse Survey 2000:

- **3.3%** of Middle Schoolers and **5.6%** of High Schoolers carried a gun in the last 12 months.
- **13.5%** of Middle Schoolers and **15.5%** of High Schoolers attacked someone with the intent to do harm.

Problem Behavior: Teen Pregnancy

Sources:

- Public Health Data Indicator System
- CDC, Youth Risk Behavior Surveillance System



Statistics from the Youth Risk Behavior Surveillance System

In Florida in 2001...

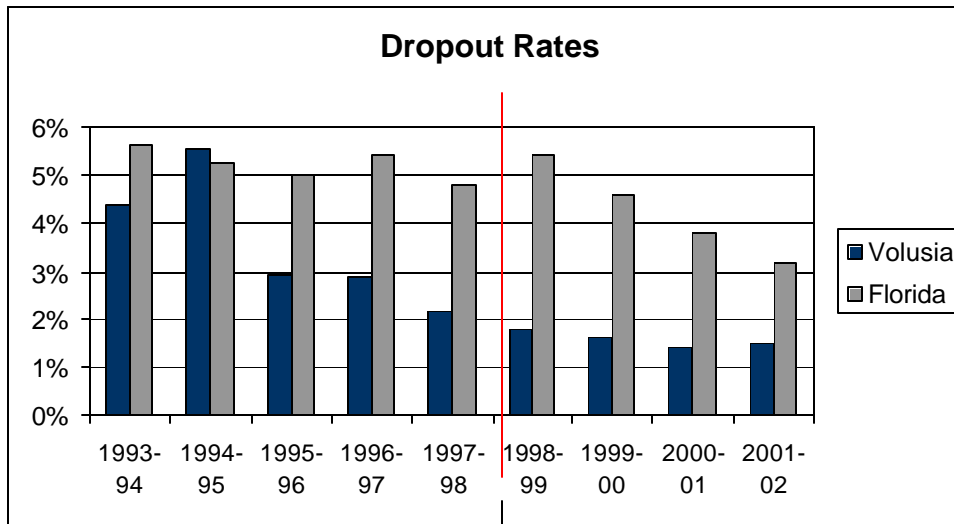
37.6% of 9th graders
50.1% of 10th graders
57.9% of 11th graders
62.9% of 12th graders
 have been sexually active.

4.0% of 9th graders
5.1% of 10th graders
6.1% of 11th graders
8.7% of 12th graders
 have been pregnant or gotten
 someone pregnant.

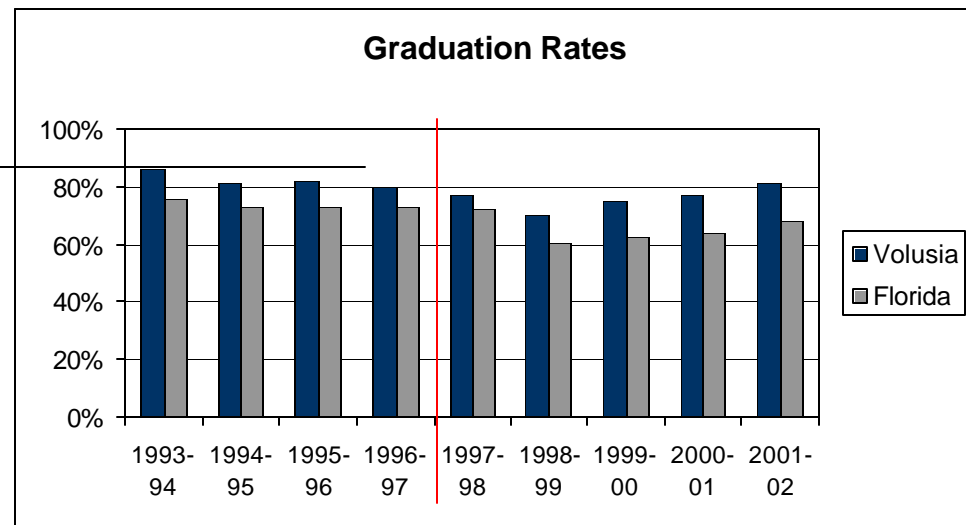
Problem Behavior: School Dropout

Sources:

- Florida Department of Education



Note: A change in calculating dropout rates and graduation rates occurred in 1998-99, so trends may be skewed.



Data Notes, Sources and Other Insights

One Voice for Volusia utilized statistical data available in the public domain throughout this process. Any statistical data has its limitations. We are including this section of the report to provide you information about our source data, as well as our “confidence” in the data. Our interpretation of the data confidence is not to be confused with the formal term “data confidence” utilized by statisticians, rather it is our opinion based on our experiences over the last three years.

Our Data Confidence Rating: We are using a simple rating system and symbols for the data utilized in this document:



High Data Confidence: The team has a high level of confidence in the accuracy of the data.



Moderate Data Confidence: The team has a moderate level of confidence in the accuracy of the data.



Low Data Confidence: The team has a low level of confidence in the accuracy of the data.



Very Low Data Confidence: The team has a very low level of confidence in the accuracy of the data.

Census 2000



Web Page Link: <http://www.census.gov/main/www/cen2000.html>

Notes: This data is based on Decennial census.

Limitations: Only conducted every ten years.

Delinquency Profile 2000-01, Florida Department of Juvenile Justice



Web Page Link: <http://www.djj.state.fl.us/statsnresearch/0001prof/profile.html>

Notes: Data from this source is taken primarily from two sources. Data from the first three fiscal years covered in the package were collected by the Client Information System, managed for DJJ by the Department of Children and Families. Data presented for the fiscal years 1998/99, 1999-00 and 2000-01 are drawn from the Juvenile Justice Information System JJIS. Also included in the Profile are "population at risk" data, estimates of the population of children age 10-17 provided by the Florida Office of Economic and Demographic Research. Historically, the unit of analysis of the Profile was defined as a "case", determined by selecting the most serious offense for any individual youth on a specific date. With the advent of the JJIS, this is now described as a "referral" but is essentially calculated in the same way. If the same youth were charged with additional offenses on the same date, these would still be counted as a single referral.

Limitations: Changes in the classification of certain offenses may make comparison difficult from year to year.

Economic Development Department, County of Volusia



Web Page Link: <http://www.floridabusiness.org/>

Notes: The data used in this report comes from the Volusia County, Florida Migration Statistics publication published by the county. This report sites their source as being the Internal Revenue Service, Unpublished Data, January 2002.

Limitations: Unknown

Florida Abuse Hotline Information System, Florida Department of Children and Families



Web Page Link: http://www5.myflorida.com/cf_web/myflorida2/healthhuman/childabuse/pubs.html

Notes: This data originates from the Abuse Hotline and is well coded.

Limitations: Very few reports are available on-line and data is released late in the year following the collection year.

Florida Department of Corrections, Annual Report



Web Page Link: <http://volusia.org/corrections/2001annrep.pdf>

Notes: This data was part of the Annual report produced by the Volusia County Division of Corrections.

Limitations: The calculation methodology and definitions for this data was unavailable.

Florida Division of Licensing, Concealed Weapons Licenses



Web Page Link: *not available on line*

Notes: The data was specifically requested through the Division of Licensing.

Limitations: The data only measures the number of Concealed Weapons license and can not be used to measure the number of guns in Volusia County.

Florida Research and Economic Database, Florida Agency for Workforce Innovation



Web Page Link: <http://fred.labormarketinfo.com/>

Notes: This data is published by the Agency for Workforce Innovation, but there is no information available as to the source of their data.

Limitations: There is no information available about the source of their data or its reliability.

Florida School Indicators Report, Florida Department of Education



Web Page Link: <http://info.doe.state.fl.us/fsir/>

Notes: The Florida Department of Education's student, staff, and finance databases are the data sources for most indicators in the Florida School Indicators Report. School districts report data to these databases during scheduled survey periods throughout the school year. Certain other indicators, such as SAT and ACT scores, have sources other than the DOE databases. Definitions for each indicator are available on-line.

Limitations: Some measures change from year to year to make trend analysis difficult. Some of the calculation methodologies are confusing.

Florida Youth Substance Abuse Survey 2000



Web Page Link: http://www5.myflorida.com/cf_web/myflorida2/healthhuman/substanceabusementalhealth/publications/fysas/

Notes: This data source is a publication based on surveys that were administered in public schools in 1999-2000.

Limitations: The surveys are self-report, so information is only based on what participants were willing to reveal. Surveys are only administered to main stream students who do not need help or extended time to complete the survey. The surveys are only available in English and no alternative schools were included in the sample. There is also some question as to the validity of the survey questions related to the risk and protective factor measures.

Public Health Data Indicator System, Florida Department of Health



Web Page Link: <http://hpeapps.doh.state.fl.us/phids/Phids1.asp>

Notes: Most of the data included in PHIDS are derived from vital statistics records of births and deaths and from epidemiological data on communicable diseases reported in Florida. Crude rates, age-adjusted death rates, and years of potential life lost are calculated by the Department of Health using standard methodologies and population estimates provided by the U. S. Bureau of the Census and the Executive Office of the Governor. Standard mid-year (July 1) population estimates are used for computing rates.

Limitations: Although most communicable diseases must be reported, very few chronic diseases are reported. Thus there are no data on most chronic diseases and conditions in PHIDS. For many indicators in many counties, the number of events is very small. Caution must be used when comparing rates in these instances and should use averages of three or more years of data when analyzing rates in these instances.

School Advisory Council Reports, Florida Department of Education



Web Page Link: http://info.doe.state.fl.us/school_reports/

Notes: These School Advisory Council Reports (SACRs) contain several types of data (indicators), including performance on standardized tests, dropout and graduation rates, attendance data, readiness to start school, teacher degree level, reported incidents of unlawful acts on school grounds or transportation, enrollment data, and other information. Most of this data is drawn from departmental databases that compile information reported by the school districts.

Limitations: Some measures change from year to year to make trend analysis difficult. Some of the calculation methodologies are confusing.

School Environmental Safety Incident Reporting (SESIR), Florida Department of Education



Web Page Link: http://www.firn.edu/doe/besss/sesir/sesir_home.htm

Notes: The School Environmental Safety Incident Reporting system collects data on 21 incidents of crime, violence, and disruptive behaviors that occur on school grounds, on school transportation, and at off-campus, school-sponsored events, during any 24-hour period, 365 days per year. Incidents are reported by schools to the districts which, in turn, provide the data to the DOE.

Limitations: Although there is a definition for each reported incident, they have changes over the years and are also subject to interpretation. This makes comparison from year to year and comparison between counties difficult.

Substitute Care Report, Florida Department of Children and Families



Web Page Link: *not available on line*

Notes: This data is only available by request, or if you have access to the State Intranet. It is compiled at the state level from District created monthly reports.

Limitations: The new data system, HomeSafenet, is still in the implementation stage and has very low data integrity. In the absence of an accurate data system, Districts utilize Excel spreadsheets and other state data systems to track data that is used in this report. The data integrity is unreliable.

Uniform Crime Report, Florida Department of Law Enforcement



Web Page Link: http://www.fdle.state.fl.us/FSAC/data_statistics.asp

Notes: UCR numbers reflect the crimes reported by the local agencies (primarily Sheriff offices and Police Departments) to FDLE. The UCR does not include all offenses reported to the police, but is limited to a well-defined list of reportable offenses. These offenses provide an indicator over time of variations in crime trends.

Limitations: UCR data is only limited by reporting irregularities. For example, some communities are more likely to report a crime to the police than others are. Other factors may include local report-writing policy, manpower allocations, training received by officers on report writing, training received by police records personnel on UCR standards and the decisions and discretion exercised by individuals at every step of the process.

Vital Statistics, Florida Department of Health



Web Page Link: <http://volusiahealth.net/>

Notes: The vital statistic reports summarize data compiled from the original records which were filed with the Office of Vital Statistics (VS) as required by law. These include records of live births, deaths, fetal deaths, and marriages and dissolutions of marriages.

Limitations: The quality of data in these reports is relative to the accuracy of the source documents that were compiled.

Volusia County Department of Elections



Web Page Link: <http://volusia.org/elections/>

Notes: This data is collected by the Volusia County Department of Elections.

Limitations: Unknown